



Online Scrum
Community

Die Entscheidung ist richtig - nur wann?

Das Richtige tun durch Denken in Lebenszyklen

Steffen Brandt

andrena objects ag

SHIFTUP

Why do we grow up, grow old, and die?



Evolution!



Photo by [Alan Godfrey](#) on [Unsplash](#)

A product is like one organism.

The organization is like its species.

The economy is like the biosphere.

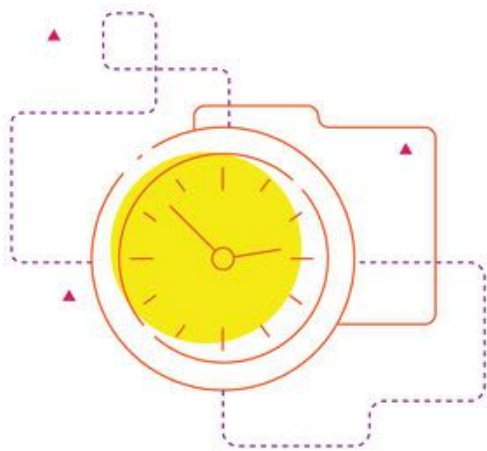
An ant hill has a life too



Ten Stages of the Human Lifecycle

1. Infant (0-1 years)
2. Toddler (2-3 years)
3. Early child (4-5 years)
4. Child (6-8 years)
5. Late child (9-12 years)
6. Teenager (13-19 years)
7. Young adult (20-35 years)
8. Adult (36-55 years)
9. Mature adult (56-79 years)
10. Late adult (80-100+ years)

Ten Stages of the Human Lifecycle (Exercise)



5 minutes

- What are some typical rules for (and behaviors of) humans in the different stages of their life?
- From which stage does the rule (or behavior) normally start? And at which stage does it typically end?
- Add an **arrow** -> or <- per rule/behavior to indicate its start or end stage.
- Place the sticky notes on the 10 lifecycle posters.



1



2



3



4



5



6



7



8



9



10

School



School





INITIATION

The business model is just an idea.



1





Say hello to iPod.
1,000 songs in your pocket.

Product Vision

EXPEDITION

First experimentation, seeking problem/solution fit.



2





<https://atlanta.eater.com/2018/2/21/17036612/dads-coffee-bar-opening-decatur>

**Minimum
Viable Product
(Lo-Fi)**

Which business model area are we exploring?

Learning Goal

The best location for my new coffee bar

Lean Experiment

Experiment number: 123
Experiment name: Coffee test
Experiment owner: Jurgen

What do we believe that might be wrong?

Risky Assumption

Relevant Critical?

I believe the best location for a coffee bar is Side Street

2

Complete Hypothesis = We believe [this relevant, critical assumption is true]. We will know we're wrong when we [do some repeatable, safe-to-fail actions] and as a result get [some timely, measurable outcome].

Which smallest test gives us fast results?

Test Actions

Repeatable Safe-to-fail?

Sell coffee from a mobile coffee cart on Side Street

3

Can you write the whole test?

Complete Hypothesis

Predictive? Falsifiable?

I believe the best location for my coffee bar is Side Street. I know I'm wrong when I sell coffee from a mobile coffee cart on Side Street, and as a result sell fewer than 50 coffees on one day.

5

What measurement is the fail condition?

Key Outcome

Measurable? Timely?

Failure when I sell fewer than 50 coffees on one day

4

FAILED PASSED

FORMATION

Full commitment of a team
to pursue the idea.



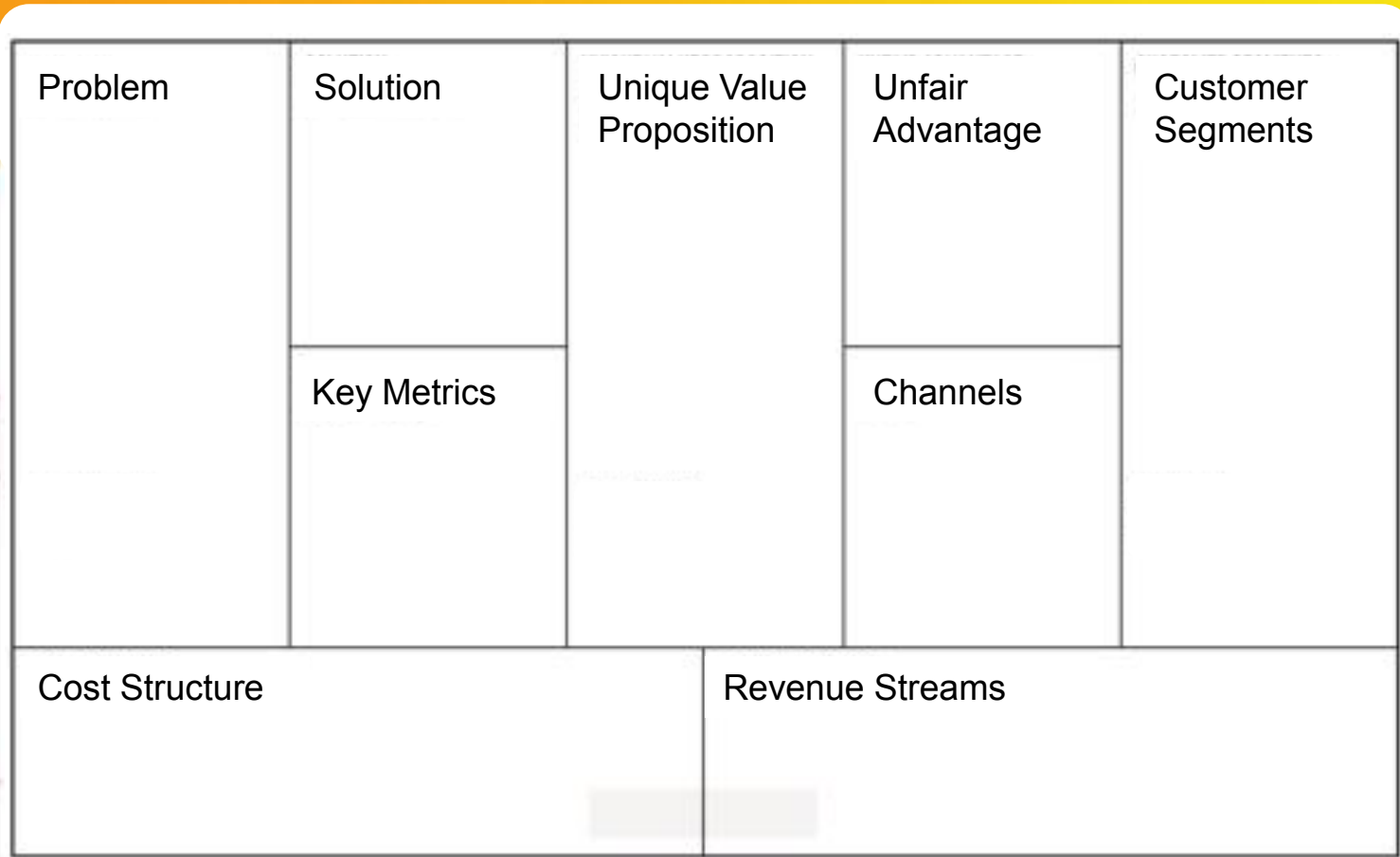
3





Photo by [Tobias Mrzyk](#) on [Unsplash](#)

Vision-Founders Fit



Lean Canvas

<https://leanstack.com/leancanvas>

VALIDATION

Iterative experimentation,
seeking product/market fit.



4





Photo by [Kelly Sikkema](#) on [Unsplash](#)

Product-Market Fit



<https://www.flickr.com/photos/splorp/6227080927/>

Minimum Viable Product (Hi-Fi)



5

STABILIZATION

Seeking business/market fit,
preparing to scale up.



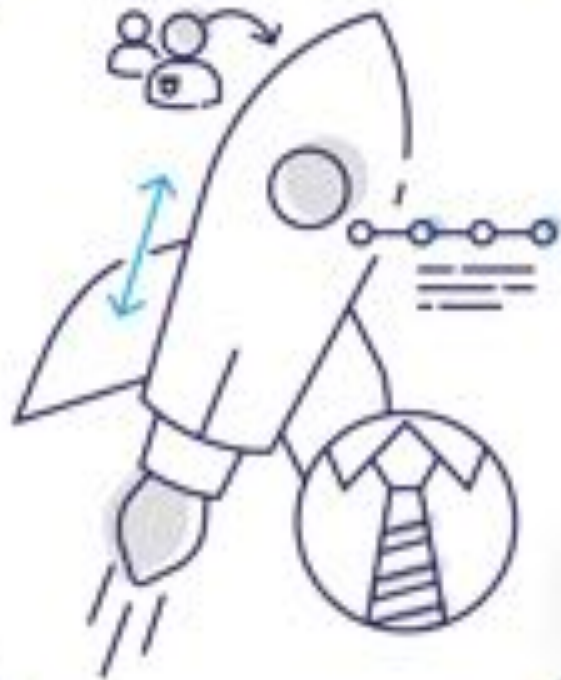
ACCELERATION

Growth hacking and rapid scaling to a large market.

A large circular icon containing a line drawing of a person sitting at a desk with a laptop, a magnifying glass over a graph, and a bar chart. The number 6 is in a smaller circle to the right.

6





7

CRYSTALLIZATION

Established in a market, switching to optimization.



EXPANSION

Expansion to other territories
and product variants.



8





The start of the end



9

CONSERVATION

All goals achieved; business model is in decline.





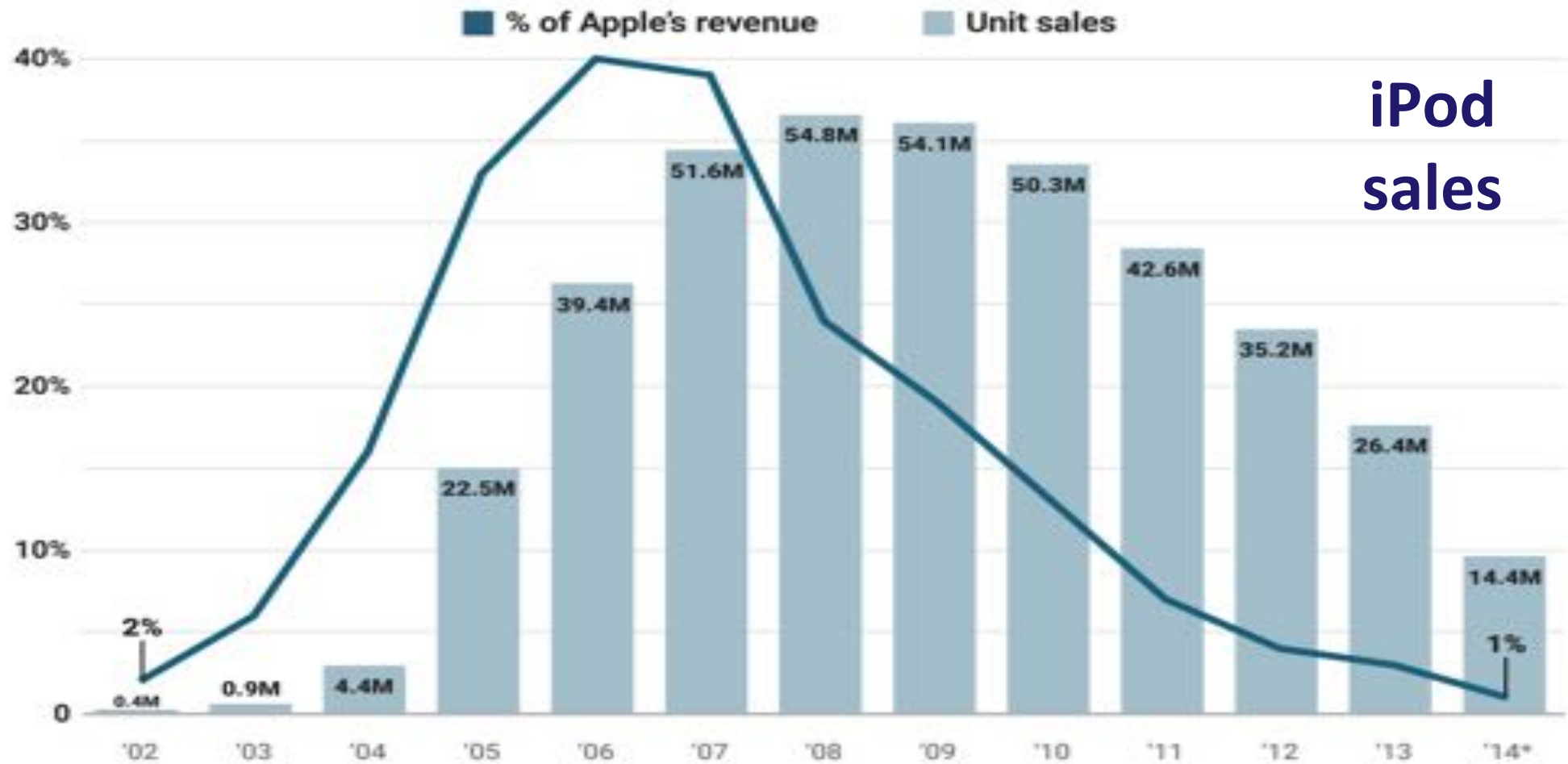
FINISH

Closure of the business,
focus on other products.

10



iPod sales



SOURCE: Apple * Apple stopped breaking out iPod sales seperately after 2014

statista | BUSINESS INSIDER

<http://uk.businessinsider.com/apple-ipod-rise-fall-chart-2017-7>

Ten Stages of the Business Lifecycle (Exercise)



5 minutes

- What are some typical rules for (and practices of) businesses in the different stages of their life?
- From which stage does the rule (or practice) normally start? At which stage does it typically end?
- Add an **arrow** -> or <- per rule/practice to indicate its start or end stage.
- Place the sticky notes on the 10 lifecycle posters.



1



2



3



4



5



6



7



8



9



10

MVPs



MVPs



Behavior depends on the stage



Exploration

Execution

Do the right thing

Do the thing right



1

2

3

4

5

6

7

8

9

10

Lifecycle stages (maturity) of the business model



Photo by [Annie Spratt](#) on [Unsplash](#)

**Different ages
need different
practices.**




**Mehr zu diesem und anderen
Themen gibt es im Shiftup
Training**

andrena.de/events



Q & A



in f  



steffen.brandt@andrena.de



andrena.de/events